

The Infection

Connection

LAWRENCE-DOUGLAS COUNTY
Health Department
 www.ldchealth.org

Pertussis Outbreak Continues

Pertussis cases continue to increase in state as well as in Douglas County

So far this year, the number of pertussis cases in Kansas have more than tripled the cases reported in 2011. In Douglas County, the Lawrence-Douglas County Health Department has investigated 54 cases of the illness since the beginning of June. These numbers include both laboratory confirmed and probable cases that meet the criteria based on symptoms present. With school back in session, the Health Department

has seen an increase in these numbers.

As of September 24, 2012, the Kansas Department of Health and Environment (KDHE) reports 418 cases in Kansas. The highest incidence is among children ages 10-14 (28.6 cases per 100,000 population). A booster dose of Tdap is recommended for this age group, who might have waning immunity.

Pertussis testing is most reliable when performed on patients who have had a cough illness of less than three weeks duration. (continued on page 2)



Health Department welcomes health officer/medical consultant

Dr. Thomas Marcellino is the Health Department's new health officer/medical consultant. He assumed the role at the end of June from Dr. Lori Nichols, who served in the position since January 2008.

Marcellino, board certified in family practice, is with Mount Oread Family Practice and received his medical degree from University of Kansas School of Medicine-Wichita in 2005. He interned at the Mayo Clinic in Scottsdale, Arizona from 2005-2005 and completed his residency at Via

Christie Family Medicine in 2006-2008 and at the University of Arizona in 2008.

"I am interested in helping the community grow to be a healthier place for all people," said Marcellino, a McPherson native. "I enjoy educating the public about healthy lifestyles and disease prevention, especially focusing on the prevention of disease through healthy lifestyles and diets."

The Health Department's health officer/medical consultant is a part-time position held by a local

physician whose duties include overseeing the investigation and prevention of communicable diseases and conditions damaging to health.

The doctor also makes necessary recommendations and referrals for treatment, approves medical protocols and serves as a resource for Health Department Staff.

Marcellino is married to Whitney, and they have a 5-year-old daughter and 4-year-old son. He enjoys spending time with them, being in the outdoors and boating.



ABOVE: To help the prevention of West Nile Virus use a mosquito repellent that contains an Environmental Protection Agency (EPA)- registered active ingredient when you are outside.

West Nile Virus Cases continue to Increase

Many people who are bitten by an infected mosquito won't get sick, but others aren't as lucky. As of September 24, 31 cases were reported in Kansas, two of which were Douglas County residents reported in June and August. Nearly half of the cases in the United States reported this summer have been in Texas.

The increase in cases is partly due to the mild winter, early spring and hot summer, which provide excellent conditions for breeding of the Culex mosquito that carries the virus.

As of September 11, 48 states had reported 2,636 cases - the highest number of West Nile virus disease cases reported to the Centers for Disease Control and Prevention (CDC) through the second week in September since 2003. Of these cases, 118 have resulted in deaths. Of these, (53 percent) were classified as neuroinvasive disease (such as meningitis or encephalitis) and 1,231 (47 percent) were classified as non-neuroinvasive disease. (continued on page 2)

Douglas County Disease Report

Disease category	Disease name	May 12	June 12	July 12	Aug. 12	Total
Enteric	Campylobacteriosis	0	4	2	0	6
	Cryptosporidiosis	0	0	0	1	1
	Salmonellosis	1	2	1	2	6
	Shiga Toxin	0	1	0	0	1
General	Group A - Strep	0	1	0	0	1
	Hepatitis B- chronic	1	2	1	1	5
	Hepatitis C	6	5	9	7	27
	Strep pneumo. invasive	0	2	0	1	3
	Neisseria Meningitis	0	1	0	0	1
	Haemophilus Influenzae	1	0	0	0	1
Vector	RMSF	5	1	6	5	17
	Lyme Disease	1	0	2	2	5
	Erlchiosis	1	0	0	1	2
	West Nile Virus	0	1	0	1	2
	Dengue	0	0	0	1	1
Vaccine-preventable	Pertussis	1	5	22	27	55
	Varicella	6	0	0	0	6
STDs (tested at HD only)	Chlamydia	11	12	6	11	40
	Gonorrhea	4	0	6	6	16
	Syphilis	0	0	0	0	0

This report includes the number of cases investigated by the Lawrence-Douglas County Health Department. Case classifications include: Confirmed, probable and suspect.

Pertussis

Continued from page 1

It is unlikely that the test would be accurate on a patient that had received greater than 5 days of antibiotics.

“Our recommendation continues to be that close contacts of a confirmed or probable case of pertussis should talk with their health care provider and be started on antibiotics” said Health Department Director of Clinic Services Kim Ens.

All cases and symptomatic close contacts should be

instructed to isolate themselves at home until they have completed a five-day course of antibiotics. Contact the Health Department at (785) 843-0721 to report a case.

Vaccination is the best protection against pertussis. Please continue to recommend Tdap for adolescents and adults who haven’t had a dose and ensure that new babies begin their Dtap immunizations at 2 months of age.

Save this number: New 24-7 epi hotline

To alert the Lawrence-Douglas County Health Department to a reportable disease after hours, please use this number: (785) 813-1660.

This number will ring a Health Department staff member’s phone. For a complete list of reportable diseases in Kansas, go to www.ldhealth.org/diseaseinvestigation.htm.

West Nile

Continued from page 1



Culex Mosquito

Please help the Health Department educate your patients regarding West Nile Virus spread by infected mosquitoes. Most people with the disease have no symptoms, however, about 20 percent of people report a mild headache, low-grade fever, body aches, nausea, vomiting and sometimes, a skin rash. A small percentage develop severe illness that can lead to swelling of the brain and in rare cases, death.

Recommendations to protect against mosquitoes that carry West Nile Virus include:

- use insect repellent that contains an Environmental Protection Agency (EPA)- registered active ingredient when you are outside. Follow package directions carefully
- Consider staying indoors at dusk and dawn when mosquitoes are most active
- Make sure your windows and doors have good screens
- Empty standing water from flower pots, buckets and anywhere that water may collect. Change the water in pet dishes and bird baths every few days. These precautions will interrupt the mosquitoes breeding cycles.

Oral Drug No Longer First Line for Gonorrhea

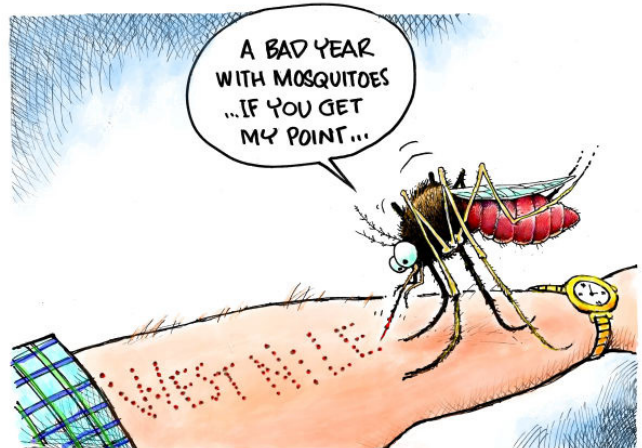
The Centers for Disease Control and Prevention (CDC) no longer recommends the oral antibiotic cefixime as a first line treatment option for gonorrhea due to possible drug resistance.

The most effective treatment for gonorrhea is now a combination therapy of the injectable antibiotic ceftriaxone with one of two other

oral antibiotics: azithromycin or doxycycline. The revised guidance was published in the CDC’s August 10, 2012, issue of Morbidity and Mortality Weekly Report (MMWR).

The change in first line treatment was prompted after recent trends in laboratory data showed that cefixime is becoming less effective in treating gonorrhea.

Laughter is the best medicine



DAVE GRANLUND © www.davegranlund.com