



Together, day by day, building a healthy community

College Degree | Adult

Definition | Percent of people with a bachelor's degree or higher level of education.

Importance | The relationship between higher education and improved health outcomes is well known, with years of formal education correlating strongly with improved work and economic opportunities, reduced psychosocial stress and healthier lifestyles.¹

Where are we | In 2012, 48% of adults in Douglas County, have a bachelor's degree or higher level of education. The percentage in Douglas County was higher than the state of Kansas and U.S in all years from 2008 to 2012.

Health Disparities | Among adults in Douglas County:

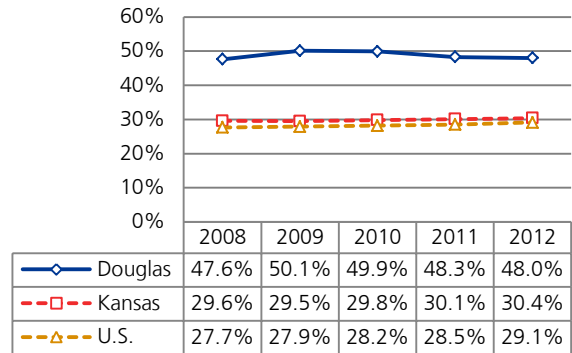
- Individuals in the age group 35 to 44 were more likely to have a bachelor's degree or higher level of education.
- Men were slightly more likely than women to have a bachelor's degree or higher level of education.

Healthy People 2020 Goal | Not available

Additional Information | The college experience develops cognitive skills and allows learning about a wide range of subjects, people, cultures and communities. Having a degree also opens up career opportunities in a variety of fields.²

Trend Analysis

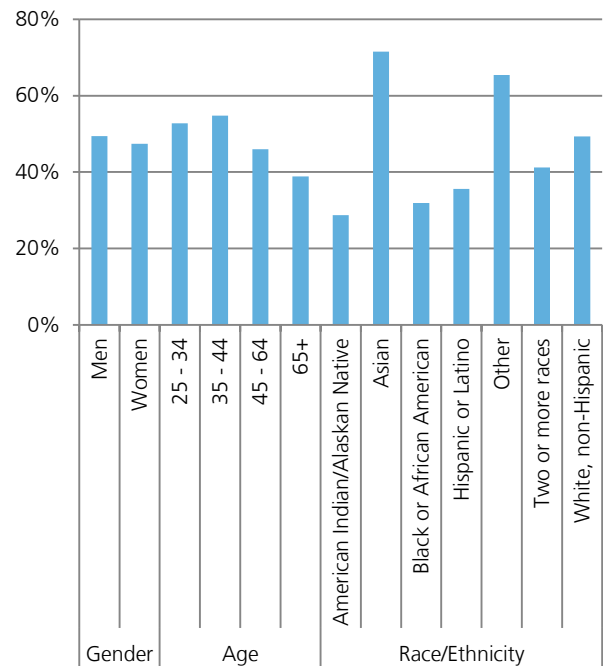
Percent of people with a bachelor's degree or higher level of education³



Disparity Analysis

Percent of people with a bachelor's degree or higher level of education¹

Douglas County, 2008 - 2012



¹Kansas Health Matters

²County Health Rankings

³American Community Survey