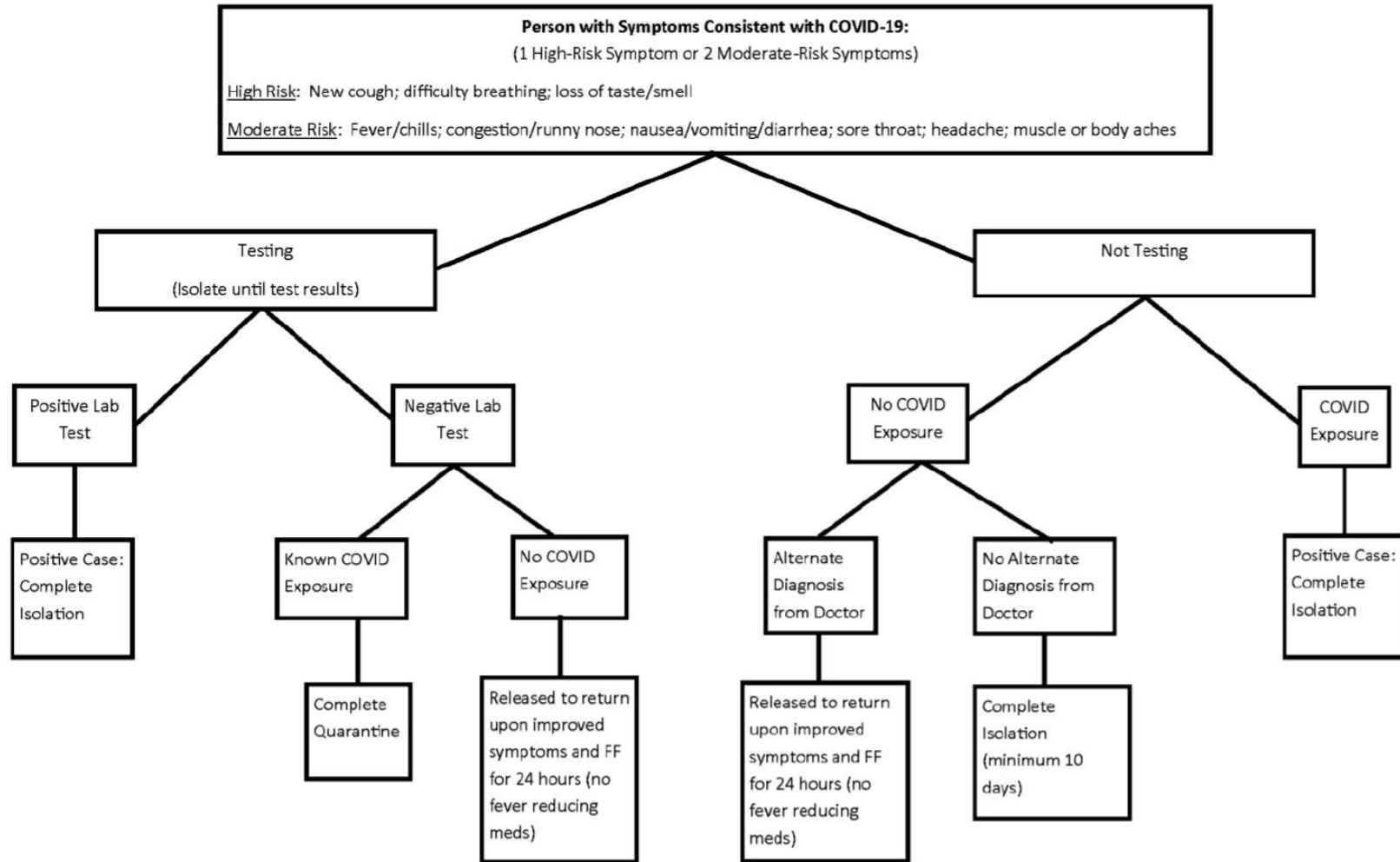


Screening for COVID-19 at daycares



Definitions:

Isolation: For positive cases; 10 days after symptom onset (or specimen collection for asymptomatic people) with symptoms improving and fever free 72 hours

Quarantine: For non-ill contacts; 14 days following last known exposure

COVID Exposure: (1) Household member + case (2) Within 6 feet for 10 minutes or longer + case (3) Direct respiratory contact with + case (4) Travel in past 2 weeks to KDHE hotspot

Positive Case: (1) PCR confirmed lab test (2) Positive Antigen Test or IgM that is either clinically compatible or had COVID exposure (3) Meets clinical criteria AND epidemiological exposure (lab not required)